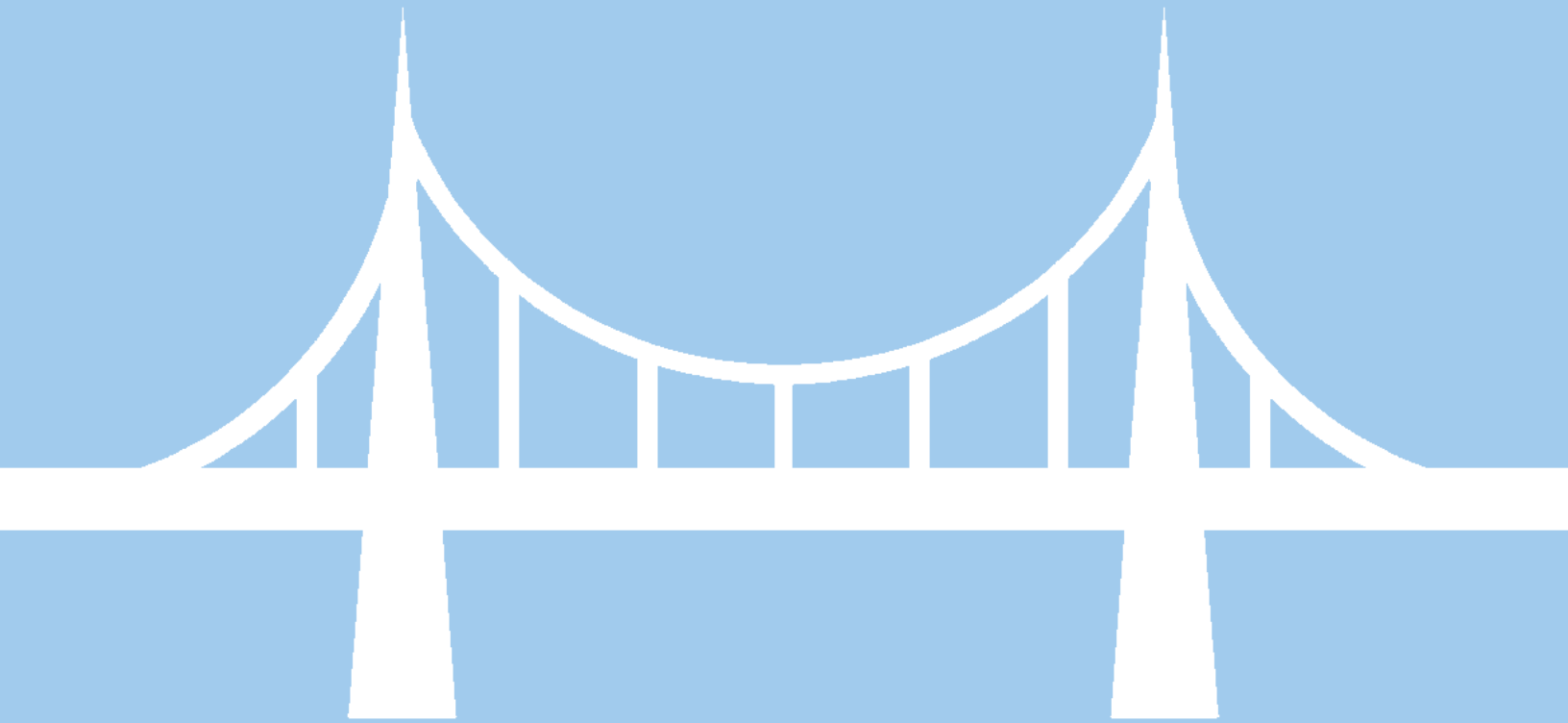


# National Service Project 2020



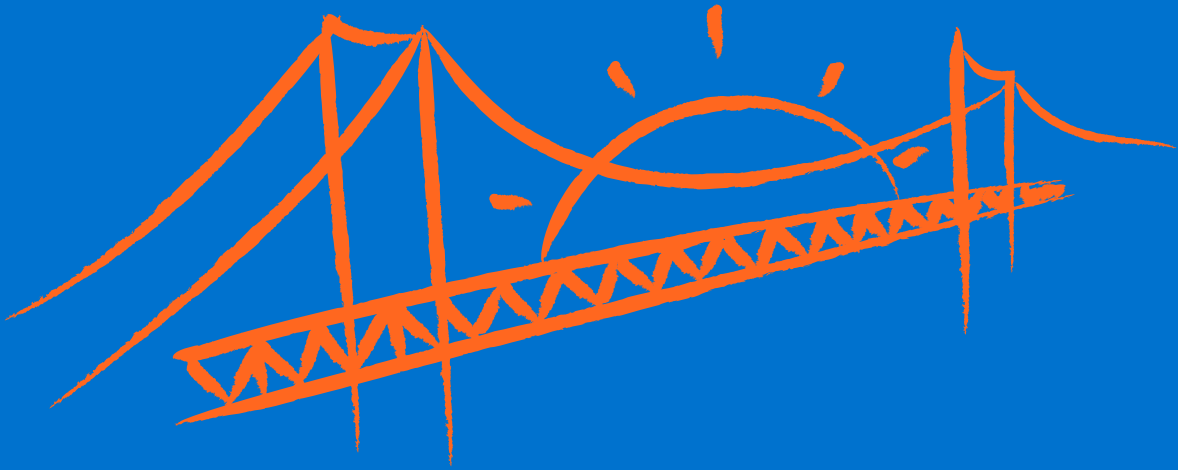
building bridges

# welcome to the **NSP!**



The National Service Project (NSP) is a framework created to help JB USA put ideas into motion and make positive change in local communities.

# how does the NSP work?



The National Service Project functions on an individual chapter level through National Service Project Liaisons (NSPLs). The NSPL of a chapter is the main planner of each chapter's activity and service project for the NSP and the main communicator between the NSP Working Group and the chapters.

---

On a national level, the NSP is coordinated by the NSP Working Group, a group of JBers from around the USA. The NSP Working Group is responsible for coordinating the projects, working with NSPLs, and promoting the project to a wider audience.



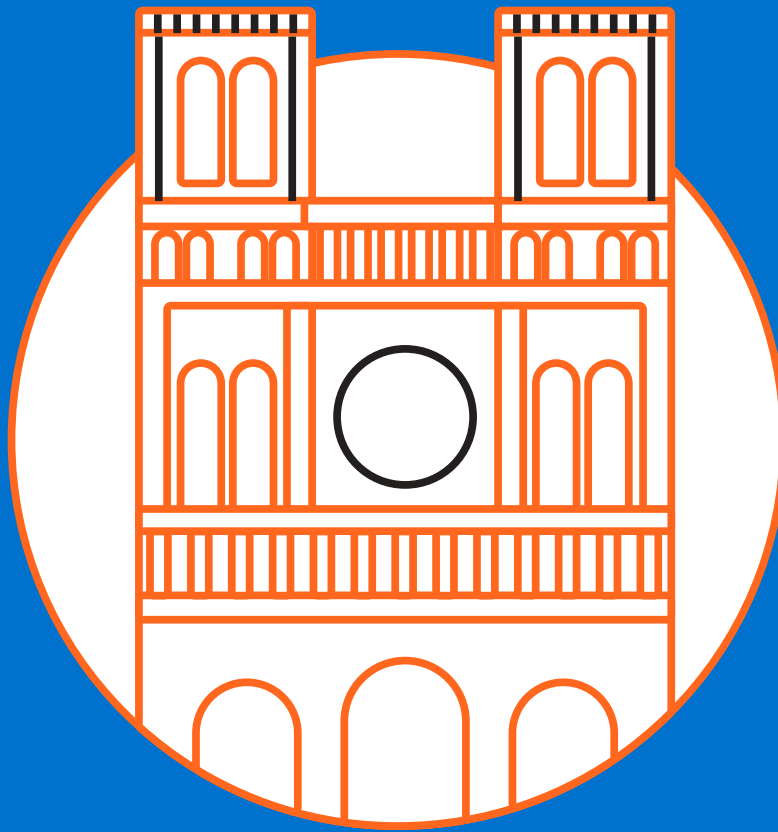
All JB chapters in CISV USA will complete a one-day **service project** in the month of March.

Each chapter will also complete an **activity** for their junior branch pertaining to the project in the month of February.

These projects and activities will all address or be inspired by an annual **theme.**

this year's theme is:

**BUILDING**

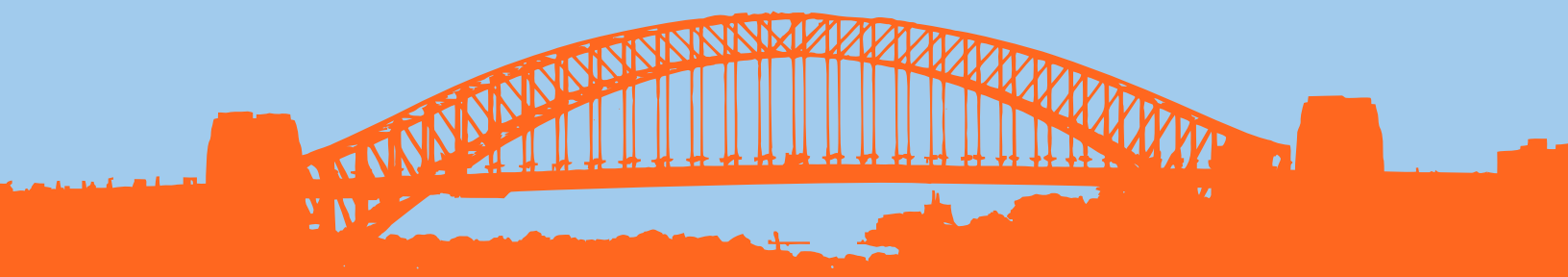


**BRIDGES**

**bridge** (verb): make (a difference between two groups) smaller or less significant.

# building bridges

CISV often exists in a bubble. This is especially obvious when we think about CISV camps, but even our local JB chapters can be isolated and removed from their surrounding communities. This year, the goal of the NSP is to bridge the gap between our CISV chapters and their wider community. In planning your projects, think about groups that are often excluded from the demographics of a CISV chapter and how you can build a connection with them. Choose a group. and consider how you can best understand their perspective and how to best serve their needs.



# project ideas

A stylized orange house icon with a triangular roof and a chimney, positioned behind the title text.

volunteer  
at a  
homeless  
shelter

A stylized orange house icon with a triangular roof and a chimney, positioned behind the text.

volunteer  
at a  
nursing  
home

A stylized orange house icon with a triangular roof and a chimney, positioned behind the text.

book  
drive

clean up  
an under-  
served park

A stylized orange tree icon with a thick trunk and a rounded canopy, positioned behind the text.

work at a  
food bank

A stylized orange plate with a fork and knife, positioned behind the text.

There are certain things every global citizen needs to keep in mind when planning service projects. Even with good intentions, the wrong actions during a service project can have a **harmful effect** on the communities we are trying to help.

When thinking about the theme of building bridges, make sure to not keep in your mind an idea of "them and us." Do not impose your ideas of what is "better" onto the groups you are working with, or assume that you know more than they do. **Always be mindful of your privilege.**

This project will be most successfully done in partnership with other like-minded organizations (LMOs). LMOs understand the needs of their community best, and NSPs are able to make the most positive impact when working with them because they already have a framework in which CISVers can work within and not impose ourselves onto a community.

# considerations

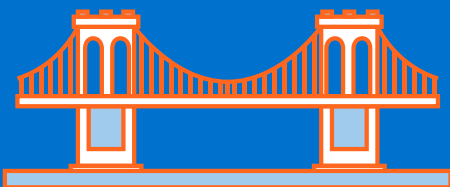


# so what is this **activity**?

This year, the NSP Working Group decided more than just a project is needed to convey the message of **building bridges**. In order to build connection with a community of people, one first needs to understand the dynamic between themselves and the community they are working with. Every chapter will complete the same activity in order to unite our chapters. You may customize the activity to make it fit your chapter's needs and resources, but please keep it to the same general structure

The activity can be done in any variety of settings, and can be whenever works best for your chapter as long as it is in the month of February. Examples of settings for your activity are:

- mini camps
- chapter meetings
- parties/ get-togethers
- standalone activities



- We suggest a long debrief, with plenty of time to reflect on participants relationships with the group you are doing your NSP with
- This is a great opportunity to advertise the service project in March!

# building bridges activity

**Facilitators:** NSPL and JB board

**Time and place:** month of February, 1.5-2 hours

**Materials:** large paper, markers

## ASK Model

**Attitudes:** Willingness to...

- Work with others and listen to others ideas
- Have an open mind when considering other's point of view

**Skills:** Ability to...

- Cooperate with others to ultimately achieve a goal
- Compromise to meet the goals of all parties
- Accomplish one problem with multiple solutions

**Knowledge:** Understanding of...

- The differing needs of communities and why those differences exist
- Why there is no "right" way to do things

# building bridges activity

**1)** Split the participants into four groups: the board of directors of the factory, the workers union, the environmental groups, and the city council. The city council should be the smallest group, with no more than four or five members. Have a JB member present in each group to participate and answer any questions.

## **2) Read this statement:**

A coal factory in your small town of NSPville has been shut down due to protests after a worker recently died on the job. The worker had complained of asthma due to the air conditions in the coal plant. The worker also was working 70+ hours a week, something that was not uncommon for the workers of the factory. This factory provides jobs to 40% of people in NSPville and there are minimal options for the people to work in other fields. However, the factory also emits 40% of the town's entire carbon output. The workers union is striking to protest the unsafe working conditions. Environmental groups are also gathering outside the factory to protest the carbon emissions. The city council has called a meeting to mediate between the three groups in order to find a solution. The goal of the meeting is to make a list of conditions for the operation of the factory that satisfy all parties. The city council will make the final decision on the conditions.

# building bridges activity

**3)** Discuss for 20 minutes within each group about their demands for the city council regarding the conditions for the factory to reopen.

**4)** Each group will appoint a representative and have 3 minutes to present their proposals to all the participants.

**5)** Have an open discussion between all four groups on what the combined conditions should be. The city council will mediate and try to compromise between them. The city council will make a list on a large piece of paper of the new conditions, trying to keep in mind the positions of each group.

- Encourage each group to argue for why they want their specific conditions, and question other groups



# building bridges debrief

## Reflect:

- What happened during the activity?
- How did your perspective influence the solution of the City Council?
- Did your group disagree with others?
- How did you solve that issue?
- Was compromising with the other groups valuable when coming up with a solution?

## Generalize:

- Why is compromising important in the world of coming up with solutions not everyone will be happy with?
- Why is being open-minded important when trying to achieve a goal that might have people disagree with each other?
- Are there any circumstances where compromising is not the answer and will not lead to an effective solution?

## Apply:

- Why is it important to understand the perspectives of others and how can you implement this into your daily life?
- In CISV, do you think that we understand and compromise with people that may think differently than us?
- *How can we bridge the gaps in our community by helping others and being open minded? \*required*

You do NOT have to ask all of these questions. Choose 2 or 3 based on how the activity went. Feel free to supplement your own as well and include references to your specific service project.

# mosaic and the NSP

## What's a mosaic?

Mosaics are a designated CISV program, and are service projects whose objectives are to meet their local community's needs and interests. The projects are generally planned and delivered in cooperation with partner organizations and they vary from a one-day event to a year-long project. Mosaic projects provide an insightful and meaningful learning experience for local participants of all ages as they have the opportunity to benefit their wider community.

## How does this relate to the NSP?

Your chapter can, but is **not required** to, designate your NSP as a mosaic. Hosting your National Service Project as a mosaic offers an excellent opportunity to:

- demonstrate local relevance
- raise profile of your chapter
- attract donors
- recruit new volunteers
- engage existing participants of the chapter
- build relationships with like-minded-organizations

There are steps that need to be taken for your project to be considered an official **mosaic** by CISV.

---

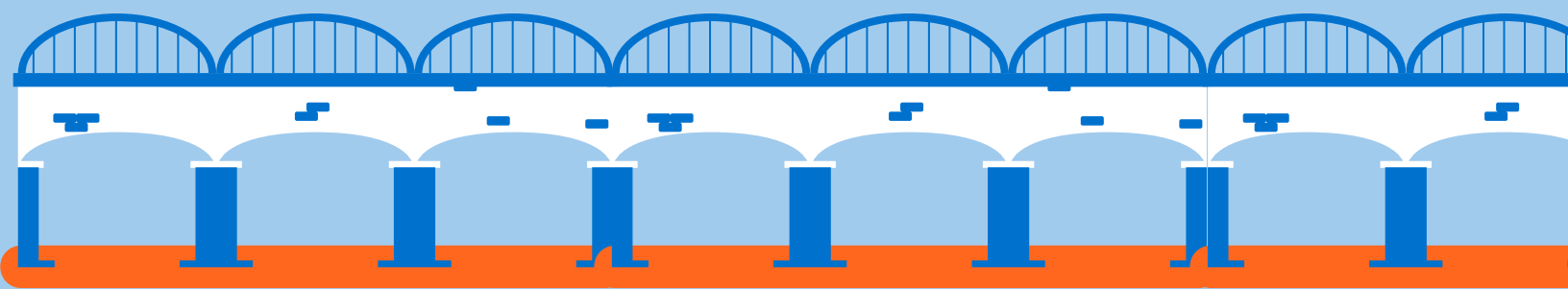
BEFORE starting the Mosaic project, complete and submit:

- The official **Mosaic Worksheet\***, which is the core resource for all Mosaic projects. It is to be used before the project begins to outline your proposal.

AFTER the Mosaic project, evaluate and report (in the worksheet):

- attendance information
- community partnerships
- conclusions and feedback

\*<http://www.cisv.org/resources/running-or-taking-part-in-educational-programmes/mosaic/mosaic-resources/>



# community

## partnerships

It is not necessary to work with an like-minded organization (LMO) for the National Service Project. However, often a greater impact can be made when CISV teams up with another organization already making an impact on their local neighborhoods. Because the theme of **building bridges** can encompass any project serving your local community, your chapter can work with any LMO that accomplishes this purpose.

Often, many people in your chapter will be aware of organizations that they have worked with in the past. Your adult board can be a helpful resource for you to find good, reputable organizations. The website [charitynavigator.org](http://charitynavigator.org) is also a good tool to use to make sure the organization you are looking to work with is reputable and responsible.

There are many other types of organizations to plan your NSP with besides conventional charities. Here are a few ideas:

**schools/  
universities**

**clubs/  
organizations**

**homeless  
shelters**



# follow the NSP!

The NSP working group will be posting pictures and updates from NSPs across the USA on our Instagram @**CISVUSANSP**.



Be sure to tag us in your pictures or DM them to us so we can post them and show off how your chapter is building your bridges!